

**TIME- AND COST-EFFECTIVE SAMPLING METHODS AS
INDISPENSABLE TOOLS IN CALIBRATION OF AIRBORNE
REMOTE SENSING DATA**

EKONOMIŠKAI EFEKTYVŪS IR TRUMPALAIKIAI MĖGINIŲ ĖMIMO
METODAI, KAIP NEPAKEIČIAMOS NUOTOLINIO STEBĖJIMO DUOMENŲ
KALIBRAVIMO PRIEMONĖS

Kornel D. Szalay¹, József Deákvári¹, Ádám Csorba¹, Gábor Milics²

¹ Hungarian Institute of Agricultural Engineering
Gödöllő Tessedik Sámuel s. 4. H-2100

² Faculty of Agricultural and Food Science, Institute of Biosystem Engineering
Mosonmagyaróvár, Vár s. 2. H-9200
kornel.szalay@gmail.com

Gauta 2013-01-30, pateikta spaudai 2013-09-02

The conventional sampling methods are no longer capable of satisfying the rapidly growing demand toward data and information. There has been a need for a measuring technology that provides broad opportunities of evaluating local or global processes or balances according to various aspects. Hyperspectral imaging spectroscopy, one of the most advanced technologies in optical remote sensing, but to clarify the relation between the feature-specific spectral respond of a surface or material and the studied factor large number of samples are necessary. The objective is to present the technological capabilities of remote sensing of our Institute and to show an alternative method for moisture content mapping which is adequate to collect the necessary amount of data to calibrate and validate airborne hyperspectral images for quantitative measurement of soil moisture content.

Keywords: moisture content, remote sensing, thematic map.

Introduction

In our modern civilization the growing demand for data and information is very important issue. The conventional measuring and sampling methods can no longer provide with the necessary information. These methods usually provide few or several discrete data which are relatively far from each other both in time and space. The modern imaging remote sensing technologies, however, have the potential to analyze large areas in a fast and precise way by providing thousands of simultaneously recorded data of land treatment units down to 1 m² scale.

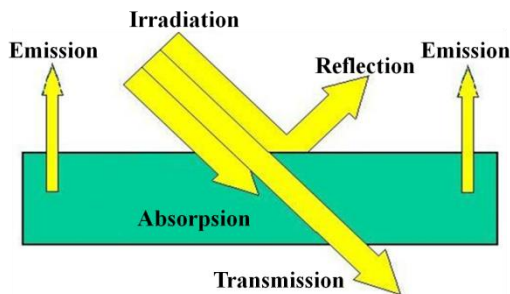


Fig. 1. EM interactions (NOAA Coastal Service Center (2007) modified)

1 pav. Elektromagnetinės radiacijos (EM) sąveika (NOAA Pakrančių tarnybos centras (2007) modifikuotas)

Remote sensing of Earth's surface includes several non-contact measurement techniques and evaluation methods. The only physical connection between the observer and the object is the electromagnetic radiation (EM). The incident EM interacts with the illuminated object. This interaction - based on the actual physical, chemical condition of the certain object and the energy, or rather the wavelength of the incident light will result in the following phenomena above (Fig. 1).

The Hungarian Institute of Agricultural Engineering (HIEA) – hereafter referred as Institute – has been working and developing wide range of remote sensing application since the early 1980's. Airborne visible (VIS) and color infra red (CIR) images were taken where signs of formal soil compaction and fungal disease/perished trees are visible (Fig. 2).

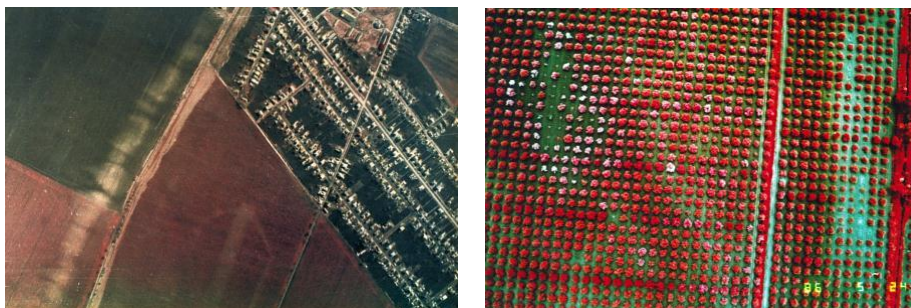


Fig 2. VIS image of a land portion and CIR image of an orchard

2 pav. Lauko dielies aeronuotrauka ir spalvotas IR sodo vaizdas

Fig 2. VIS image represents those situations where purely the visible region of the electromagnetic radiation is enough to detect changes or anomalies, but only from a certain height.

In the end of the 80's our Institute started working with thermal infrared (TIR) technology.

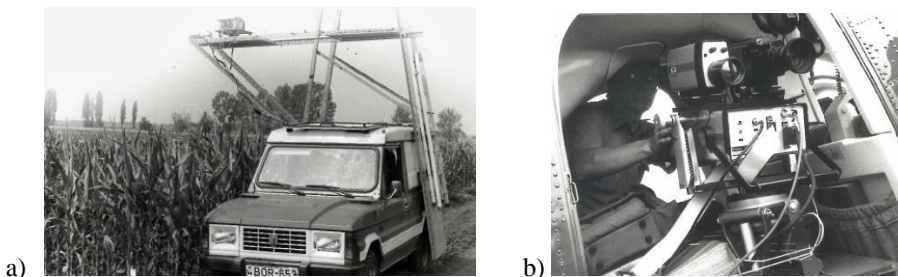


Fig. 3. Thermal evaluation of maize and thermovision assembly on a chopper
3 pav. Kukurūzų terminė analizė a) ir ir termovizinė aparatūra sumontuota malūnsparnyje



Fig. 4. Thermovision under laboratory circumstances
4 pav. Termovizinė aparatūra laboratorinėse sąlygose

Ground-based and airborne (Fig. 3.) furthermore laboratory (Fig. 4.) applications were used and developed for examination and monitoring of various agricultural and mechanization processes.

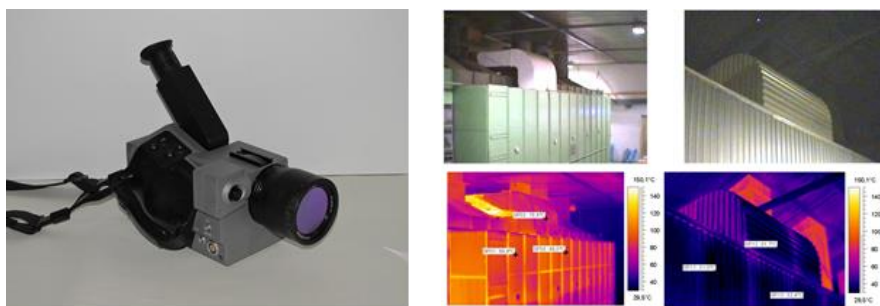


Fig. 5. FLIR ThermoCAM PM695 and thermal image of studied dryers
5 pav. FLIR ThermoCAM PM695 kamera ir tirtų džiovintuvų termovaizdai

From 2000, handheld thermal cameras (Fig. 5.) are used to study the efficiency and thermal management of dryers and electric devices and several other agricultural and industrial applications.

The dynamic development of different remote sensing technologies resulted in the hyperspectral imaging spectroscopy, which is one of the most advanced

technologies in optical remote sensing. Since the year of 2006, together with the University of Debrecen, Department of Water and Environmental Management our Institute have been operating an AISA DUAL airborne twin-sensor system (Specim Ltd.).

The hyperspectral technology has greatly improved the efficiency of data utilization and created new perspective for modern information management in precision agricultural production [1, 2, 3, 4]. With the use of the hyperspectral remote sensing one can record the reflected flux radiation form the studied surface on hundreds of narrow, adjacent bands. Simultaneously, gray-scale pictures are taken of these bands and recorded separately. This data recording method results in the so called data cube [5, 6, 7]. In this high resolution of spectral information is assigned to all spatial pixel of the data cube, hence the spectral characteristics of the surface can be mapped by high definition geometrical sampling method up to hundreds of adjacent spectral bands (Fig. 6).

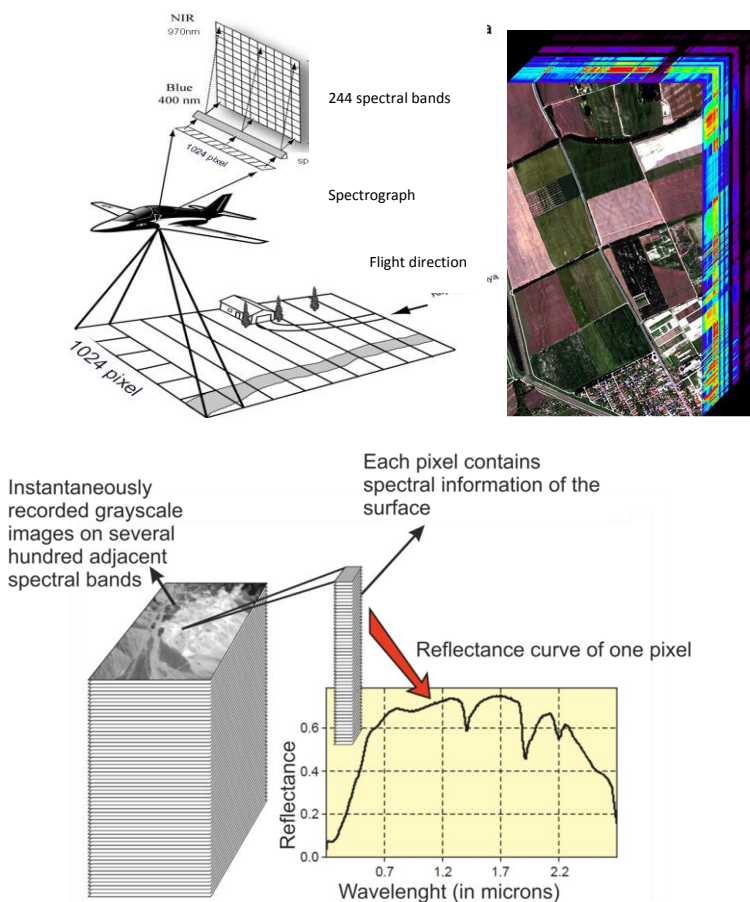


Fig. 6. Procedure of hyperspectral imaging
6 pav. Hiperspecialaus vaizdo gavimo procedūra

We introduce a system which extends the range of the detectable (visible light) VIS [8, 9] to NIR (near infrared) and the SWIR (shortwave infrared) that are able to operate in the full optical wavelength range of 400 to 2450 nm (AISA DUAL) and 350 to 2500 nm (ASD Fieldspec®3 MAX). Characteristic near infrared wavelengths can indicate changes in moisture content of vegetables [10]. Though, the processing of these images is a very complex procedure [11]. The coordinates of in-field experiments are recorded and the soil surface spectrum can be fitted to the adequate pixel of the hyperspectral airborne image that is an important element of the subsequent evaluation processes. The number and the quality of in-field measurements determine the final accuracy of the airborne images. Using this new generation data monitoring and sampling methods we can obtain quantitative relationships between the environmental and physiological parameters of the vegetation [12, 13, 14, 15, 16, 17], soil quality parameters [18, 19] and different sources of soil contaminations, climate attributes [20, 21, 22, 23] and the features of reflectance spectra.

The Hyperspectral group of our Institute offers new generation of data acquisition methods. Beyond the scientific application of the technology our services are available to provide the client (Research Institute, Industrial or Private Companies) with the adequate hyperspectral methodologies to meet agricultural, industrial or other scientific needs.

Materials and methods

The AISA DUAL airborne twin-sensor system (Fig. 7.), which consist of the EAGLE and HAWK sensors, that has the potential for detecting the electromagnetic radiation in the wavelength range of 400 to 2450 nm with sub-meter level of spatial precision. During the flight the geographical coordinates and the position of the plane are recorded by Oxford RT-3000 GPS/INS system. Beside the DUAL mode both sensor can be operated autonomously depending on the aim of the experiment. The technical parameters of the sensor system are summarized in Table 1.

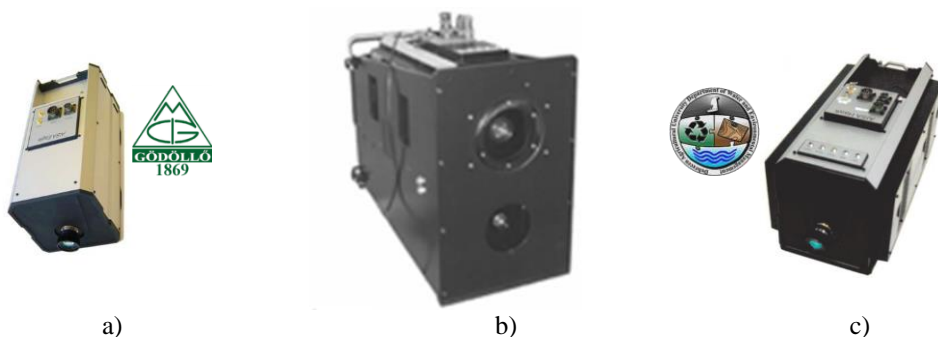


Fig. 7. Eagle sensor, AISA DUAL twin-sensor, Hawk sensor
7 pav. Eagle jutiklis a), AISA DUAL jutiklis b) ir Hawk jutiklis c)

Table 1. Technical parameters of the sensor system
1 lentelė. Jutiklių sistemų techniniai duomenys

	AISA Eagle	AISA Hawk	AISA Dual
Spectral range (nm)	400-970	970-2450	400-2450
Spectral sampling band (nm)	2,3	5,8	2,3/5,8
Spectral bands	244	254	498
Spatial pixels	1024	320	320
Spectral depth (bit)	12	14	12
Image rate (image/sec.)	up to 100	up to 100	up to 100
FOV (degree)	37,7	24	24
IFOV (degree)	0,037	0,075	0,075
Detectors	CCD	MCT	CCD&MCT

By using a spectroradiometer for collecting reference spectra in field or under laboratory circumstances it is possible to correct and validate airborne data. For laboratory tests we constructed a light-isolated cabinet where disturbing environmental light is shielded. The ASD Field Spec[®]3 MAX portable spectroradiometer (Fig. 8) and the laboratory cabinet are presented in Fig. 9.



Fig. 8. ASD Field Spec[®]3 MAX
8 pav. ASD Field Spec[®]3 MAX spektrodometras



Fig. 9. Laboratory cabinet
9 pav. Laboratorinė kamera



Fig. 10. ProLamp light source
10 pav. Šviesos šaltinis ProLamp



Fig. 11. ContactProbe sensor-head
11 pav. Jutiklio galvutė ContactProbe

Two methods of data acquisition are possible according to the size and physical parameters of the object to be tested. ProLamp (Fig. 10) is used to illuminate the object from a distance of 30-70 cm. Measurements of small object areas can be carried out with PlantProbe. sensor-head (Fig 11) which has internal light source.

As opposed to the traditional land specific management precision agriculture makes possible the land treatment unit (LTU) based crop production. These treatment units can be reduced to tens of square meters, or even further. By providing high spatial resolution thematic maps which can form the base of differential land treatments the imaging remote sensing technologies can greatly assist in precision agriculture.

The moisture content of soil is very decisive factor in agricultural production. Thus, obtaining information on its quantitative and spatial distribution is a vital issue. Conventional sampling methods usually provide few or several discrete data which are relatively far from each other both in time and space. In this study beside the conventional gravimetric sampling method we are measuring some indirect physical parameters which are sensitive to the change of moisture content in the soil. With integrated use of remote sensing and ground based reference data one can create high resolution soil moisture content maps that can widely be used in conventional and precision agriculture, too.

Test area was assigned in the Hungarian Institute of Agricultural Engineering. Moisture content was measured by three different methods: Electric conductivity (EC), Time domain reflectometry (TDR), Conventional sampling method.

The Veris-3100 equipment (Fig. 12) measures the EC at 0 to 30 cm and 0 to 90 cm depth ranges. Coordinates of every measurement are also recorded with 1 Hz. During the measurement the GPS signal is provided by Trimble AgGPS 114. Work speed is 9 to 18 km/h and usually 5 m line width is used.

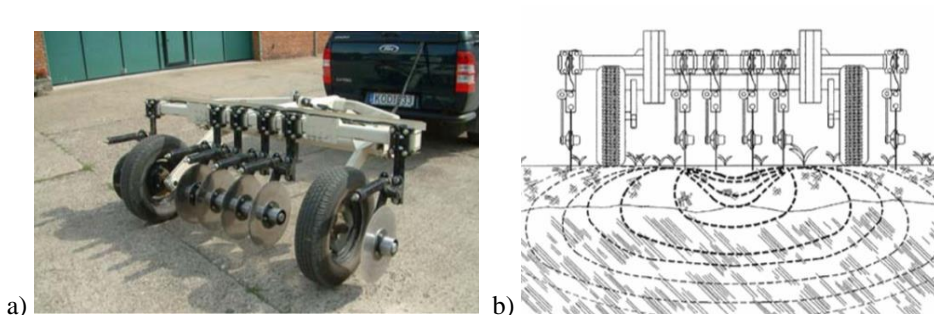


Fig. 12. Veris-3100 EC measuring device a) and its working principle b)
12 pav. Matavimo įranga Veris-3100 EC a) ir jos veikimo principas b)

In the common practice the GPS antenna of the system was placed on the top of the tractor's cabin and the distance between antenna and measuring disks were measured and compensated by "Boom offset" value – in this case it was 3.42 m. Precision was validated on an assigned trajectory by cruising back and forward several times, on various travel speed. Trajectories were analyzed on map (Fig. 13).

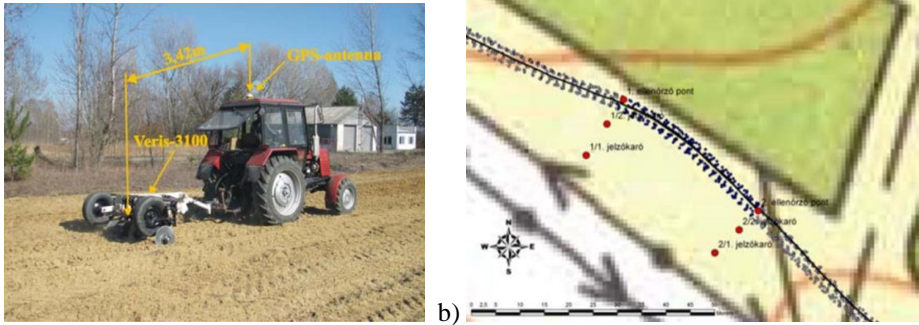


Fig. 13. Distance between the GPS antenna and measuring disks of Veris-3100 a) and the validation method b)

13 pav. Atstumai tarp GPS antenų ir Veris-3100 matavimo diskų a) bei ratifikavimo metodas b)

The Spectrum TDR-300 device works with time domain reflectometry principle and measures volumetric moisture content. Resolution is 1 %, precision is < 3 % and the measuring range is 0 to 50 %. Beside the measured moisture content the equipment also records the coordinates of the sampling position (Fig. 14).

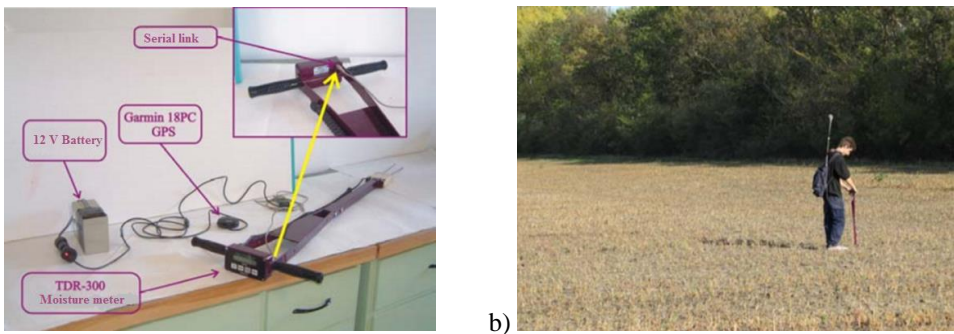


Fig. 14. The Spectrum TDR-300 soil moisture meter and its utilization (GPS receiver attached with antenna in a backpack)

14 pav. Dirvos drėgnio matuoklis Spectrum TDR-300 a) ir jo taikymas b) (GPS siūstuvus su antena kuprinėje)

During the conventional sampling process an Eijkelkamp soil sampler was used. The sampling coordinates were logged by MobileMapper CE GPS receiver. A TDR-300 device was used to measure the soil moisture on four positions nearby from which we composed one mean value (Fig. 15).

150 Samples were taken from the upper surface layer. Soil samples were dried – based on paragraph 12 of MSZ 08 0205-78 standard – in dryer at 105 °C temperature until reaching a constant weight. Gravimetric moisture contents were converted into volumetric moisture content.

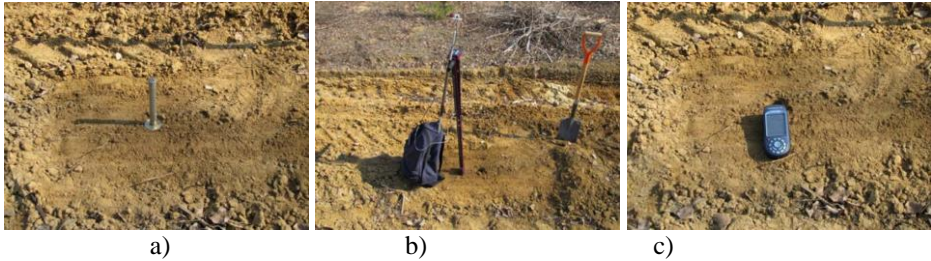


Fig. 15. Collection of soil sample, measuring volumetric moisture content with TDR-300 and logging coordinates of sampling position

15 pav. Dirvos pavyzdžių rinkimas a), tūrinio drėgmės kiekio matavimas TDR-300 b) ir pavyzdžių padėties nustatymas c)

During the spectral sampling method the ContactProbe sensor head was used to measure the spectral reflectance of the samples. Each sample was measured with 5 repetitions. Each measurement is the integration of 20 scans. The measuring arrangement and the working principle of the ContactProbe sensor head is presented by Fig. 16.

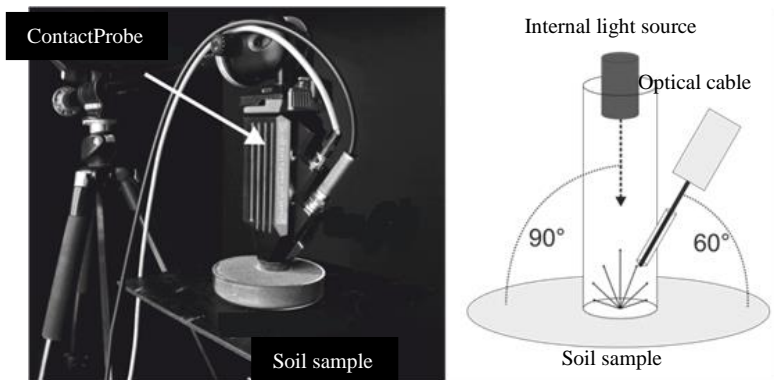


Fig. 16. Soil evaluation with ContactProbe sensor head

16 pav. Dirvos vertinimas naudojant ContactProbe jutiklio galvutę

Results and discussion

Using the data gathered by Veris-3100 and TDR-300 and the reference moisture content measured in laboratory after drying we made an interpolated map of EC and volumetric soil moisture content of the area (Fig. 17).

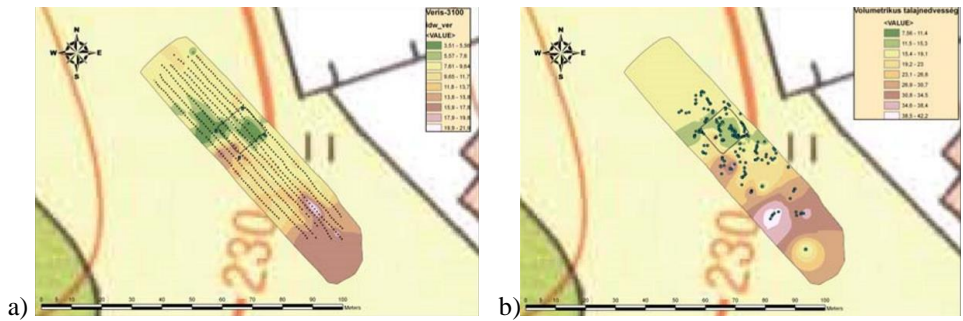


Fig. 17. Interpolated EC map with sampling points along the trajectory of the towed Veris-3100 – a) – and Interpolated volumetric moisture content map with dispersedly and manually recorded TDR-300 sampling points –b)

17 pav. Interpoliuotas EC pavyzdžių ėmimo taškų žemėlapis išilgai Veris-3100 vilkimo krypties ir interpoliuotas tūrinio drėgnio kiekio žemėlapis išbarstytai rankiniu būdu užrašytais TDR-300 pavyzdžių ėmimo taškais b)

The EC map interpolated by using Veris-3100 data and the interpolated moisture map indicate a certain level of correlation.

Evaluation also showed that the GPS receiver calculates the position where the antenna is placed and “Boom offset” function has no effect. Therefore to reduce this position error we designed and manufactured a frame which makes possible to fix the GPS antenna just above the measuring discs of Veris-3100 device. Further measurements were carried out by using this frame which has decisively improved the positioning accuracy (Fig. 18).



Fig. 18. Veris-3100 device upgraded with antenna holder frame
18 pav. Veris-3100 prietaisas patobulintas antenos laikiklio rėmu

To study the relationship between soil moisture content and reflectance spectra was studied. Partial Least Squares Regression (PLSR) was applied to build predictive models using reflectance spectra acquired under laboratory conditions, and to derive quantitative information on the moisture content of soils. During processing PLSR with leave-one-out cross validation (LOOCV) was used to calibrate the spectral data with the soil moisture content (measured in laboratory). The PLSR

algorithm selects successive orthogonal factors that maximize the covariance between predictor (spectra) and response (laboratory) data. To determine the number of factors to retain in the calibration models LVOOCV was used. To select the optimal cross validated calibration model, root mean squared error (RMSE) of predictions was computed. The model with the lowest RMSE and highest R^2 was selected. The calibration models were independently validated against the soil data. Analysis showed that the moisture content of the samples ranged from 13,91 to 21.29 %. The number of PLSR factors provided the lowest RMSE and highest R^2 was 9. The predictive capacity of reflectance spectroscopy and PLSR was good ($R^2 = 0.744$) for the soil moisture content. These results can be explained by the strong spectral activity of water. The accuracy of the model (RMSE = 0.84%), is very good (Fig. 19).

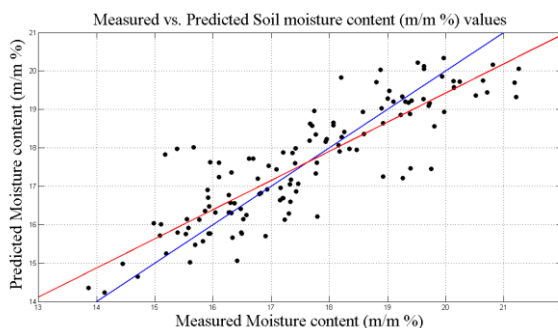


Fig. 19. Cross plot of laboratory measured and model predicted values of soil moisture **19 pav.** Laboratorijoje gautų ir modeliutų dirvos drėgnio reikšmių grafikai

Such calibrated model can be applied to an appropriately corrected airborne hyperspectral image. As a result of such procedure a map presenting the spatial distribution of soil moisture values can be provided.

Conclusions

The hyperspectral imaging spectroscopy is a promising future tool in the field of optical remote sensing and it creates new perspective for modern information management in site specific agricultural production.

One can determine quantitative relationships between the environmental and physiological parameters of vegetation cover and the soil quality parameters as well as the features of the reflectance spectra by the new-generation data monitoring and sampling method. These reflectance spectra have characteristics of different crops and provide with the possibility of accurate classification and detection.

In the first phase of research work, however, in order to develop the appropriate data processing method and build models concerning to the chosen application, or rather aim of evaluation a large number of reference data is required.

Study confirms the significance of alternative soil sampling instruments which can provide with the necessary number of samples to calibrate and validate airborne hyperspectral images.

Former and present results show the potential of using EC based soil moisture content measuring, the authors continue studying the relationship between these parameters to describe the exact correlation. By combining the laboratory spectroscopy and hyperspectral imaging with Veris-3100 system and TDR-300 device even limited number of labour-intensive ground sampling and laboratory analysis will be sufficient to perform detailed evaluation of the scanned area.

References

1. Szilvia Erdeiné Késmárki Gally; L.Fenyvesi; Z.Papp: Examination of soil and plant biotic and abiotic stress factors by thermal and hyperspectral remote sensing methods, *Cereal Research Communications* Vol. 37, 2009.,Suppl. 513-516 pp. ISSN 0133-3720
2. Deákvári, J.; Kovács, L.; Papp, Z.; Fenyvesi, L.; Tamás, J.; Burai, P.; Lénárt, Cs. Az AISA hiperspektrális távérzékelő rendszer használatának első eredményei, XXXII: MTA-AMB K&F Tanácskozás, Gödöllő, 2008, 46-50 pp.
3. Burai, P.; Tamás, J. (2005) Evaluation of soil degradation by means of high resolution remote sensing data. (In Hungarian: Talajdegradációs folyamatok vizsgálata nagy felbontású távérzékelte adatforrások alapján). *Agrártudományi Közlemények*, no. 16 különszám (2005): 145-148.
4. Papp, Z.; Fenyvesi, L. (2007): Új távérzékelési módszer a mezőgazdaságban és a környezetgazdálkodásban. *Mezőgazdasági Technika*, XLVIII. Évf. 2007. január 26-28 pp.
5. Fenyvesi, L.; K. Gally, S.E.; Papp, Z. (2007): Investigations of the agro-ecosystems with remote sensing, *Cereal Res. Com.*, 2008. IP 1,19
6. Fenyvesi, L.; Késmárki-Gally Erdeine, S. : Application of a remote sensing method by environmental protected manure utilization, *Hungarian Agricultural Engineering*, 22/2009. HU ISSN 0864-7410, 5-9 pp
7. Kesmarki-Gally Erdeine, S.; Papp, Z.; Fenyvesi, L.: Examination of the agro-ecological systems with remote sensing. (2008) *Cereal Research Communications*, 36 (SUPPL.5) pp. 655-658.
8. Lágymányosi, A.; Szabó, I. (2011) Investigation of chaff surface with imaging (In Hungarian). *Fiatel Műszaki Tudományos Ülésszaka XVI.*, Kolozsvár Műszaki Tudományos Füzetek 177-180 pp.
9. Lágymányosi A.; Szabó I. (2009) Calibration procedure for digital imaging, Synergy and Technical Development, Gödöllő, Hungary, 30. Synergy2009 CD-ROM Proceedings
10. Kaszab, T.; Firtha, F.; Fekete, A. (2008) Influence of Non-ideal Storage Conditions on Carrot Moisture Content Loss. *Progress in Agricultural Engineering Sciences* 4, 61–75 pp. DOI: 10.1556/Progress.4.2008.4

11. Firtha, F.; Fekete, A.; Kaszab, T.; Gillay, B.; Nogula-Nagy, M.; Kovács Z.; Kantor, D.B. (2008), Methods for Improving Image Quality and Reducing Data Load of NIR Hyperspectral Images. *SENSORS* 8: pp. 3287-3298. (2008)
12. Balla, I.; Szentpétery, Zs.; Jolánkai, M. (2011) The impact of precipitation on crop yield in a small-plot winter wheat (*Triticum aestivum* L.) trial series. *X. Alps-Adria Scientific Workshop*. Növénytermelés. Opatija, Croatia 309-313 pp.
13. Klupács, H.; Tarnawa, Á.; Balla, I.; Jolánkai, M.: (2010.) Impact of water availability on winter wheat (*Triticum aestivum* L.) yield characteristics. *Agrokémia és Talajtan* vol. 59 no. 1 (2010), 151-156 pp.
14. Fenyvesi, L. (2008): Characterization of the soil - plant condition with hyperspectral analysis of the leaf and land surface, *Cereal Research Communication*, (Supp 5) 659-663 pp.
15. Erdeiné Késmárki Gally S.; Papp, Z.; Fenyvesi, L.: Agro-ökorendszerek vizsgálata távérzékeléssel. *Növénytermelés* 58 (2009) 1, 11-24 pp.
16. Neményi, M. (2013): Precision Crop Production and Sustainability. In: Neményi M., Varga L., Facskó F., Lőrincz I. (Eds.) *Sopron: Nyugat-magyarországi Egyetem Kiadó*, ISBN:978 963 334 103 2 pp. 211-212.
17. Neményi, M. (2013): Investigation of Fusarium Ear Rot Symptoms on Maize (*Zea Mays* L.) Using a Spectroradiometer. In: Neményi M., Varga L., Facskó F., Lőrincz I. (Eds.) "*Science for Sustainability*" *International Scientific Conference for PhD Students*, Sopron: Nyugat-magyarországi Egyetem Kiadó, 2013. pp. 4 (ISBN:978 963 334 103 2)
18. Máthé, L.; Pillinger, Gy.; Kiss P. (2010): Vályogtalaj mechanikai jellemzőinek vizsgálata a nedvességtartalom és ülepedettség függvényében. XV. Fialat Műszakiak Tudományos Ülészaka, Kolozsvár, Románia, 2010, pp. 201-204. ISSN 2067-6 808
19. Tolner, I., T, (2011) Investigation of the effects of various acid treatments on the optical reflection spectra of a soil sample. *10 th Alps-Adria Scientific Workshop*. Növénytermelés. Opatija, Croatia 207-210 pp.
20. Erdélyi, É. (2009): Benefit and detriment of changing climate in crop production, In: *Workshop on Modelling and Measuring Aspects of some Environmental Issues in European Union and National Projects*, 2009, Novi Sad, Serbia
21. Erdélyi, É.; Horváth, L. (2006): Climate Change and Precipitation Needs of Winter Wheat, Summer University on Information Technology in Agriculture and Rural Development, Debrecen, 33-40 pp.
22. Erdélyi, É.; Boksa, D.; Szenteleki, K.; Hufnagel, L. (2009): The role of biomass in mitigation of global warming. *CIGR Symposium* . 2009.09.1-4., Rosario, Argentina
23. Tarnawa, Á.; Nyárai, F.; Máté, A. (2011) Statistical assessment of climatic impacts on the nitrogen nutrition of maize (*Zea mayze* L.) crop. *10 th Alps-Adria Scientific Workshop*. Növénytermelés. Opatija, Croatia 207-210 pp.

Kornel D. Szalay, József Deákvári, Ádám Csorba, Gábor Milics

EKONOMIŠKAI EFEKTYVŪS IR TRUMPALAIKIAI MĖGINIŲ ĖMIMO METODAI, KAIP NEPAKEIČIAMOS NUOTOLINIO STEBĖJIMO DUOMENŲ KALIBRAVIMO PRIEMONĖS

Santrauka

Tradiciniai mėginių ėmimo metodai jau nebegali patenkinti sparčiai augančio duomenų ir informacijos poreikio. Būtina tapo matavimo technologija, kuri suteikia plačias galimybes įvertinti vietos ir globalių procesų sprendimus pagal įvairius aspektus. Vizualizavimo spektroskopija, viena iš pažangiausių optinių nuotolinių stebėjimų technologijų, tačiau norint nustatyti ryšį tarp paviršiaus arba medžiagos specifinių spektrinių savybių ir analizuojamų veiksnių, reikia paimti daug mėginių. Darbo tikslas yra pateikti Institute sukurtus nuotolinių stebėjimų technologinius įrenginius bei parodyti alternatyvų dirvos drėgnio žemėlapių sudarymo metodą, kuris yra taikomas norint surinkti reikiamą kiekį duomenų, naudojamų kalibruoti ir patvirtinti vizualizavimo spektroskopijos gautus vaizdus, pagal kuriuos atliekamas dirvožemio drėgnio kiekybiniam įvertinimui.

Drėgnis, nuotolinis stebėjimas, teminis žemėlapis.

К. Д. Салаи, Й. Дзаквари, А. Чорва, Г. Милич

МЕТОДЫ НАПРАВЛЕННЫЕ НА ПОВЫШЕНИЕ ЭФФЕКТИВНОСТИ ВРЕМЕНИ И ЗАТРАТ КАК НЕОБХОДИМЫЕ СРЕДСТВА В КАЛИБРАЦИИ ДАННЫХ ПРИ ДИСТАНЦИОННОМ ЗОНДИРОВАНИИ

Резюме

Традиционные способы отбора образцов почвы больше уже неспособны удовлетворить стремительно нарастающую потребность в области информационных данных. Необходима стала измерительная технология, которая обеспечивает применяемый широком кругом метод анализа как локальных и глобальных процессов, так и изучения уравновешенных природных систем. Среди оптической дистанционной измерительной техники одной из самых развитых разработок является гиперспектральный дистанционного зондирования, однако для установления зависимости между специфическими спектральными разнообразиями свойств поверхности ландшафта и исследуемым фактором требуется многочисленное количество образцов. В статье представлены разработанные Институтом приборы дистанционных исследований, кроме того альтернативный способ для измерения влаги почвы, который делает осуществимым количественную калибровку гиперспектральных снимков и валидацию множества результатов.

Содержание влаги, дистанционное зондирование, тематическая карта.